

PLANTING SCHEDULE

Westover Tree Planting									
No.	Abb. Text	Species	Form	Age	Girth	Height	Clear Stem	Root	
5	Acr cm S	Acer campestre 'Streetwise'	Semi-Mature	4x	20-25cm	500-600cm	min 200cm	RB/CIAP	
4	Bet p	Betula pendula	Standard (Extra Heavy)	3x	14-16cm	425-500cm	175-200cm	RB/CIAP	
4	Be ut	Betula utilis jacquemontii	Standard (Extra Heavy)	3x	14-16cm	425-500cm	175-200cm	RB/CIAP	
9	Opms ht L	Carpinus betulus 'Lucas'	Standard (Extra Heavy)	3x	16-18cm	400-450cm	min 200cm	RB/CIAP	
5	Figs sy D	Fagus sylvatica 'Dawyck'	Semi-Mature	3x	20-25cm	500-600cm	min 200cm	RB/CIAP	
2	Pin n	Pinus nigra	Feathered	4x	+25cm	400-550cm	>50cm	RB/CIAP	
2	Pyrs d C	Pyrus calleryana 'Chanticleer'	Standard (Semi-mature)	4x	30-35cm	600-650cm	min 200cm	RB/CIAP	
4	Ti cor GS	Tilia cordata 'Green Spire'	Standard (Semi-mature)	4x	30-35cm	600-650cm	min 200cm	RB/CIAP	
35									

Westover Native Hedge Mix									
Qty	Abb. Text	Species	Root	Height	Habit	Form	Age	Centres (m)	Mix %
5	Acr cm	Acer campestre	B	60-80cm		Transplant	0.250	20.00	%
15	Cms sn	Cornus sanguinea	B	60-80cm	Branched		0.250	5.00	%
5	Crtg mn	Crataegus monogyna	B	60-80cm		Transplant	0.250	20.00	%
36	Cryls av	Corylus avellana	B	60-80cm	Branched		0.250	12.50	%
15	Ery er	Erythronium europaeus	B	60-80cm	Branched		0.250	5.00	%
29	Liqm v	Ligustrum vulgare	C	60-80cm	Leader & Lateral		0.250	10.00	%
29	Liqm v	Ligustrum vulgare	B	60-80cm	Branched		0.250	10.00	%
22	Rz on	Rosa canina	B	40-60cm	Branched		0.250	10.00	%
22	Vb op	Viburnum opulus	B	60-80cm	Branched		0.250	7.50	%
293									

Westover Evergreen Hedge Mix									
Qty	Abb. Text	Species	Root	Height	Habit	Form	Age	Centres (m)	Mix %
86	Eln x eb	Elaeagnus x ebbingei	C	80-100cm	Branched		0.250	50.00	%
35	Lign ov	Ligustrum ovalifolium	C	80-100cm	Bushy		0.250	20.00	%
52	Phn x fr RR	Photinia x fraseri 'Red Robin'	C	80-100cm	Branched		0.250	30.00	%
173									

Groundcover Embankment Mix 01									
Qty	Abb. Text	Species	Container	Root	Height	Habit	Centres (m)	Mix %	
187	Cnth th R	Ceanothus thyrsiflorus 'Reperans'	3L	C	30-40cm(D)	Bushy	0.500	18.00	%
73	Cnth at G	Ceanothus caeruleus 'Groni'	3L	C	40-60cm(D)	Branched	0.500	7.00	%
207	Ery jp	Erythronium japonicum 'Microphyllum Alborevangelus'	3L	C	30-40cm	Branched	0.500	20.00	%
242	Hdr d DV	Hedera colchica 'Dentata Variegata'	3L	C	60-80cm(D)	Several Shoots	0.400	15.00	%
103	Hyp ms	Hypericum moserianum	3L	C	30-40cm	Bushy	0.500	10.00	%
207	Jnp ht W	Juncus horizontalis 'Wittmeri'	3L	C	30-40cm	Branched	0.500	20.00	%
103	Jam nd	Jasminum nudiflorum	3L	C	40-60cm	Branched	0.500	10.00	%
1122									

Specimen Shrub Planting						
Qty	Abb. Text	Species	Container	Root	Height	Habit
2	Cms sn MNF	Cornus sanguinea 'Mid-Winter Fire'	10L	C	80-100cm	
2						

Westover Climber Planting						
Qty	Abb. Text	Species	Container	Root	Height	Habit
2	Hdr th G	Hedera helix 'Glacier' (climber - 3 shoots)	3L	C	60-80cm	Several Shoots
3	Hdr ht P	Hedera helix 'Petaloid' (climber - 3 shoots)	3L	C	60-80cm	Several Shoots
1	Lnc hn	Lonicera henryi (climber - 3 shoots)	3L	C	60-80cm	Several Shoots
3	Lnc pro	Lonicera periclymenum (climber - 3 shoots)	3L	C	60-80cm	Several Shoots
9						

Westover Mix A Planting									
Qty	Abb. Text	Species	Container	Root	Height	Habit	Centres (m)	Mix %	
315	Hb pn P	Hebe pinguifolia 'Paege'	3L	C	20-30cm(D)	Bushy	0.400	50.00	%
315	Hb vr	Hebe verriana	3L	C	20-30cm	Bushy	0.400	50.00	%
630									

Westover Mix B Planting									
Qty	Abb. Text	Species	Container	Root	Height	Habit	Centres (m)	% Mix	
174	Ery fr ENG	Eucyrtus fortunei 'Emerald 'y Gold'	2L	C	20-30cm(D)	Bushy	0.400	50.00	%
174	Ery fr H	Eucyrtus fortunei 'Hartequi'	2L	C	20-30cm(D)	Bushy	0.400	50.00	%
348									

Westover Mix C Planting									
Qty	Abb. Text	Species	Container	Root	Height	Habit	Centres (m)	% Mix	
94	Hb WIG	Hebe 'White Gem'	5.7-5L	C	30-40cm	Bushy	0.400	40.00	%
70	Lvm an R	Lavandula angustifolia 'Rosa'	5.7-5L	C	30-40cm	Bushy	0.400	30.00	%
56	Piv at BS	Perovskia atriplicifolia 'Blue Spire'	3L	C	30-40cm	Bushy	0.450	30.00	%
220									

Westover Mix D Planting									
Qty	Abb. Text	Species	Container	Root	Height	Habit	Centres (m)	% Mix	
42	Brichy S	Brachyglottis 'Sunshine'	3L	C	30-40cm	Branched	0.600	35.00	%
62	Cnth th R	Ceanothus thyrsiflorus 'Reperans'	3L	C	30-40cm(D)	Bushy	0.500	35.00	%
65	Sht ch	Santolina chamaecyparissus	3L	C	20-30cm	Bushy	0.450	30.00	%
189									

Westover Mix E Planting									
Qty	Abb. Text	Species	Container	Root	Height	Habit	Centres (m)	% Mix	
259	Ery fr EG	Eucyrtus fortunei 'Emerald Gaiety'	5.7-5L	C	30-40cm(D)	Bushy	0.400	50.00	%
167	Fch MP	Fuchsia 'Mrs Piggott'	3L	C	20-30cm	Bushy	0.500	50.00	%
426									

Westover Mix F Planting									
Qty	Abb. Text	Species	Container	Root	Height	Habit	Centres (m)	% Mix	
98	Escd DR	Escallonia 'Dorland Radiance'	3L	C	40-60cm	Bushy	0.600	40.00	%
88	Or x hs	Olearia x haastii	5.7-5L	C	40-60cm	Bushy	0.600	35.00	%
70	Wg fr V	Wiegelia florida 'Variegata'	3L	C	40-60cm	Branched	0.500	25.00	%
276									

Westover Mix G Planting									
Qty	Abb. Text	Species	Container	Root	Height	Habit	Centres (m)	% Mix	
35	Ery fr EG	Eucyrtus fortunei 'Emerald Gaiety'	3L	C	15-20cm	Several Shoots	0.400	30.00	%
30	Mhn aq A	Malva aquilum 'Apollo'	3L	C	30-40cm	Branched	0.500	40.00	%
22	Vb dv	Viburnum davidii	3L	C	20-30cm	Bushy	0.500	30.00	%
87									

BIOSECURITY									
RPS GROUP ARE COMMITTED TO THE PROTECTION OF THE UK ENVIRONMENT AND RECOGNISE THE IMPORTANCE OF RISKS POSSED BY IMPORTED PESTS AND DISEASES									
<ul style="list-style-type: none"> All trees and shrubs are to be sourced responsibly, in the first instance, from UK Nurseries / suppliers, where they have been propagated and/or grown on for a minimum of 5 years in the UK (2 years for shrubs). In light of this, all suppliers shall be approved, shall share our values and must have a sound Biosecurity Policy / Management Systems in place to demonstrate the traceability of their stock, and an awareness of the prevalence of all current biosecurity threats, both domestically and abroad. The contractor is responsible for ensuring that they operate in strict accordance with the latest guidelines set out by DEFRA, including regularly checking for updates in relation to the latest health controls / diseases, i.e. (http://planthealthportal.defra.gov.uk) Inspections will be carried out at selected nurseries and plant health certification / passports will be sought to identify traceability of tree and shrub stock as required. 									

PLANTING SPECIFICATION

EXISTING TREES AND SHRUBS

Where existing trees & shrubs are to be retained they should be subject to a full arboricultural inspection for safety. Any surgery required shall be in accordance with BS 3998 (2010) 'Tree Work - Recommendations', shall comply with any existing T.P.O requirements and shall require the prior approval of the Landscape Architect.

Avoid damage to branches, trunks and roots of trees. All existing trees & hedges to be retained are subject to BS 5807 (2012) 'Trees in relation to design, demolition and construction - Recommendations', and should be fully fenced off, prior to the commencement of any works, in accordance with Figure 2 (p20) at the full extent of the root protection zone, as determined by section 4.6 (p10-11) and Annex D (p40).

No storage of materials, disposal of rubbish, site fire, spillage of oil and chemicals, ground compaction, excavation or changes in level shall be carried out within existing tree / hedge canopies.

New shrub planting pits below existing trees to be hand dug to avoid conflict with tree roots. Avoid increasing ground levels below existing trees. Free-draining, neutral acidity topsoil (e.g. with a high sand content), should be employed to achieve the minimum 450mm depth growing medium.

PLANTING

All plants and planting to comply with the requirements of all current / relevant British Standard specifications including BS 8845 (2014) 'Trees from Nursery to Independence in the Landscape', BS 3936: Part 1 (1992), Part 2 (1990) and Part 4 (2007) and BS 4043 (1989) where applicable, BS 4422 (1989). All plants to be supplied in accordance with the plant schedule and with regard to imported stock and notifiable diseases within the Plant Health Act 1967 (revised 2009). Any plant material planted outside the recognised planting season (Nov-Feb), to be containerised stock and supplied at the sizes specified. Where possible, trees and shrubs of UK provenance are preferred.

TREE PLANTING

A suitable method of foundation allowing for existing ground conditions is to be provided to accommodate the proposed tree planting. All trees are to be planted as shown ensuring a minimum of 5 metres from buildings and 3 metres from drainage and services. Where necessary, root barriers to be installed (supplier GreenBlue Urban Ltd or equal approval), as recommended by structural engineer. Allow for the use of container grown stock during the period 1 April to 31 October, and field grown stock from 1 November to 31 March.

NOTE: BELOW GROUND PREPARATION OF ALL TREE PITS IS TO BE AGREED WITH LOCAL AUTHORITY TREE OFFICER PRIOR TO INSTALLATION, WHERE TREES ARE PLANTED WITHIN OR DIRECTLY ADJACENT HARD PAVED AREAS, SUFFICIENT ROOTING VOLUME MUST BE PROVIDED INCLUDING (IF RECD) THE USE OF A MODULAR CELL STRUCTURE SUCH AS SILVACELL (OR EQUAL APPROVED)

SHRUB PLANTING

Where a shrub planting mix has been specified, plants to be grouped in 3 No. (min.) to 7 No. (max.) single species groups. Larger species to be located towards the rear of planting beds (i.e. where against a screen wall / house frontage), or towards the centre of an island planting bed. Thorny species to be located centrally within the planting bed.

RABBIT PROTECTION

Contractor to assess site for presence of rabbits. If rabbits are present, contractor is to provide rabbit proof fencing to either a) the entire site boundary, or b) the boundary of all planting beds. Contractor to ensure all existing and new vegetation (ornamental and native) and seeding is protected.

TOPSIL REQUIREMENTS

To BS 3882 (2015) 'Specification for topsoil' as qualified by full contract specification. All areas shall be cultivated to a minimum depth of 150mm. Full weed, rubbish and stones over 20mm gauge shall be removed. Earth to be rolled as required and raked in two directions. Applied to all newly planted areas (except wildflower / meadow planting), to manufacturers' recommendations where appropriate. Full analysis of existing and imported topsoil required prior to use.

Shrub / structure planting beds - 450mm depth
Heavy standard tree pits - 1500mm dia x 450mm depth (Note: 450mm depth subsoil to be provided below - refer to tree pit details)
Grass areas - 100mm depth

Where necessary increase tree pit dimensions to ensure that tree pits are at least 75mm deeper and 150mm wider than rootball. Break up bottom of pits to a depth of 150mm. Compacted glazed sides of pits should be roughened.

TOPSIL IMPROVEMENTS

Applied to all newly planted areas, to manufacturers' recommendations where appropriate:

- Incorporate 75mm depth of soil conditioner into topsoil during cultivation;
- Incorporate Enmag CRF granular fertilizer at approx 140g per pit to standard tree pit (bushes) and 70g per pit to structural / ornamental shrub planting;
- Watering - supply minimum 54 litres / tree + 4.5 litres/shrub at planting;
- Mulch - After weeding and watering, lightly fork over planted areas before applying a min. 10mm depth 50-100mm grade bark mulch. Ornamental Bark to consist of predominantly matured British Pine Bark with an even nominal particle size distribution of 5-35mm with 0% dust & fines & less than 5% wood content. The product shall be pest, disease & weed free & not have been treated with Methyl Bromide or any additives. The product shall have been tested in accordance with the requirements of BS 4790:1987 for fire resistance.
- Geotextile membrane to be installed between topsoil and bark mulch, with min. 200mm overlap and holes cut for planting. Sufficient pegs to be installed to prevent membrane from lifting. Main Contractor to ensure bark mulch is retained in place on sloping ground.

PLANT MATERIAL TREATMENT

NB All to be British grown stock and fully hardened off.

Root Dip: Proprietary Root Dip applied to all bare rooted stock (1) at time of lifting at nursery and (2) prior to planting.
Anti-Dessicant: Proprietary anti-dessicant to be applied to foliage of all containerised / rootballed material in leaf, specimen conifers and evergreens etc. (1) prior to transportation and (2) during any delay in planting.
Pruning: Allow for pruning of all deciduous trees and shrubs by 1/3rd following planting at Landscape Architects direction or as indicated in the planting schedule.
Tree Stakes: Stakes to be pressure treated, round, smooth and peeled Larch or Chestnut, not less than 100mm in diameter. Advanced nursery stock - double staked with cross bar.

PROTECTIVE FENCING

The contractor shall maintain fencing until all site works are completed. The contractor will then remove the fencing and reseal the ground. The fencing will remain the property of the contractor. Within the area so fenced, the existing ground level shall be neither raised nor lowered, all excavations shall then be carried out by hand. The Local Planning Authority shall be advised in writing when the protective fencing has been erected so that it can be checked on site before development commences, and shall thereafter be maintained during the period of construction.

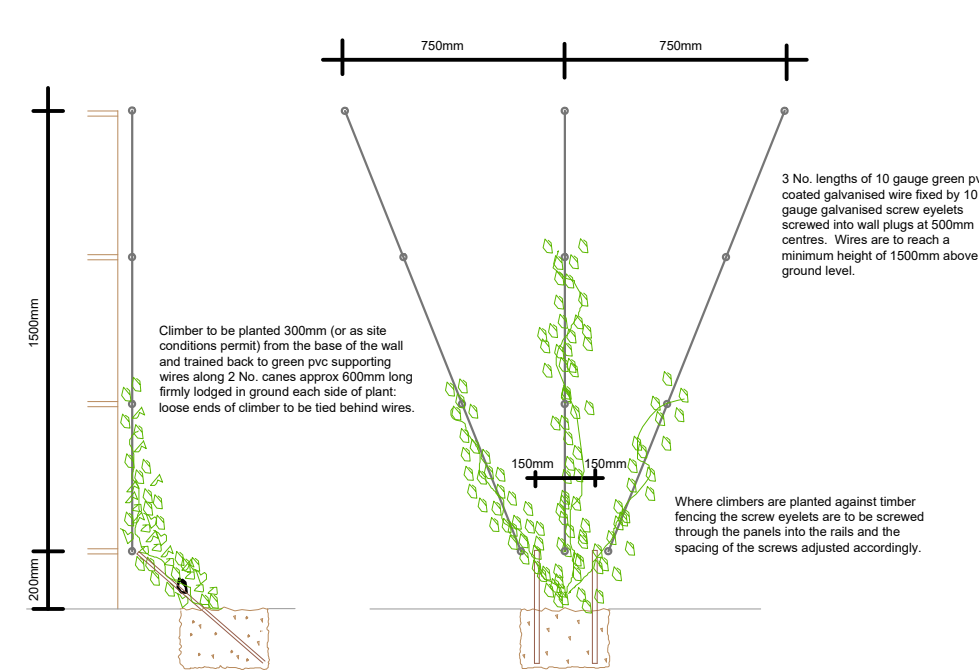
MAINTENANCE

Regular visits (minimum 18 No.) required during the defects liability / rectification period to maintain all planted areas in a weed and litter free condition using a combination of chemical spray and hand weeding to be agreed with the Landscape Architect. Any plant found to be dead, dying or otherwise defective shall be replaced during the next planting season. Maintenance to include watering, pruning, pest and diseases control and re-mulching as required. Watering shall be carried out as necessary to maintain healthy growth, and where possible should adhere to Annex G of BS 5454:2014. Final visit to be immediately prior to handing over and to include a fertilizer treatment of Enmag CRF granular fertilizer (6:20:10) at 100g/m² and 25mm depth bark mulch top up to all planted areas.

SAFETY PRECAUTIONS

The landscape sub-contractor is to take all safety precautions to prevent any injury to any persons. The landscape sub-contractor shall comply with the requirements of the Health & Safety at Work Act 1974 and current Construction, Design and Management Regulations (2015).

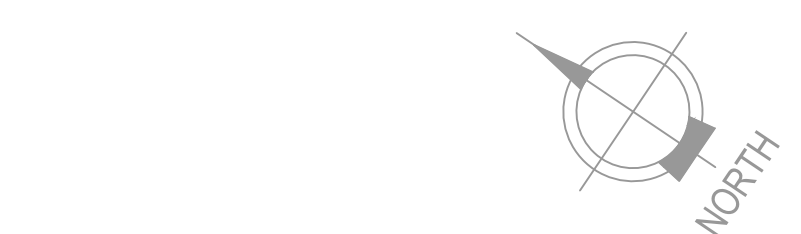
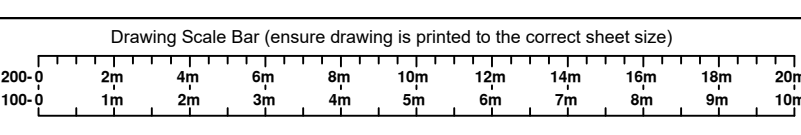
CLIMBER SUPPORT DETAIL



NOTE: All climbing plants to be trained up adjacent structures using the climber support detail, as illustrated. Pyracantha species to be planted WITHOUT canes.

© 2021 RPS Group

- Notes
- This drawing has been prepared in accordance with the scope of RPS's appointment with its client and is subject to the terms and conditions of that appointment. RPS accepts no liability for any use of this document other than by its client and only for the purposes for which it was prepared and provided.
 - If received electronically it is the recipient's responsibility to print to correct scale. Only written dimensions should be used.
 - This drawing should be read in conjunction with all other relevant drawings and specifications.



P15	Specimen tree + climber planting added to corner of Castle Lane and Lawford Road	JBT	DME	19.09.24
P14	Additional tree, evergreen hedge and shrub planting added along northeastern external boundary treatment	JBT	DME	25.07.24
P13	Tree planting increased in number and spec	DC	DJ	01.08.23
P12	Species amended to Groundcover Embankment Mix	JBT	DME	11.05.23
P11	Final line correction	JBT	DME	12.05.23
P10	Minor amendment to offset existing trees + summary specification	JBT	DME	26.04.23
P09	Tree specification updated to accord with BNG requirements	JBT	DME	08.03.23
P08	Amendment to accord with latest layout + existing tree intentions to accord with A&A	JBT	DME	06.03.23
P06	Additional screening planting added along eastern boundary to screen to accord with embankment planting	JBT	DME	27.01.21
P05	Revised layout and additional tree planting added	DC	DC	21.02.21
P04	Minor amendment in accordance with viability study	JBT	DME	19.02.21
P03	Final layout	JBT	DME	18.02.21
P02	Addition of existing vegetation and screening study	NG	JBT	12.02.21
P01	Final layout	JBT	DME	04.02.21
rev	Decription	By	Alt	04.02.21